

**ALSAC MODERN FARM EQUIPMENTS SAN. TİC. LTD. ŞTİ.**

TURGUTLU ORGANİZE SANAYİ BÖLGESİ

TURGUTLU / MANİSA

Tel : 0 (236) 320 02 57 - mail : [info@alsacmakine.com](mailto:info@alsacmakine.com)

[www.alsacmakine.com](http://www.alsacmakine.com)



# ALSAC

## ABOUT US

Our company has started its business life by producing brick cutting machines in Turgutlu, MANİSA in 1986.

Thereafter, with the developments in the husbandry in our country, it has become one of the most precious firms in producing manure separators and manure scrapers since 2001.

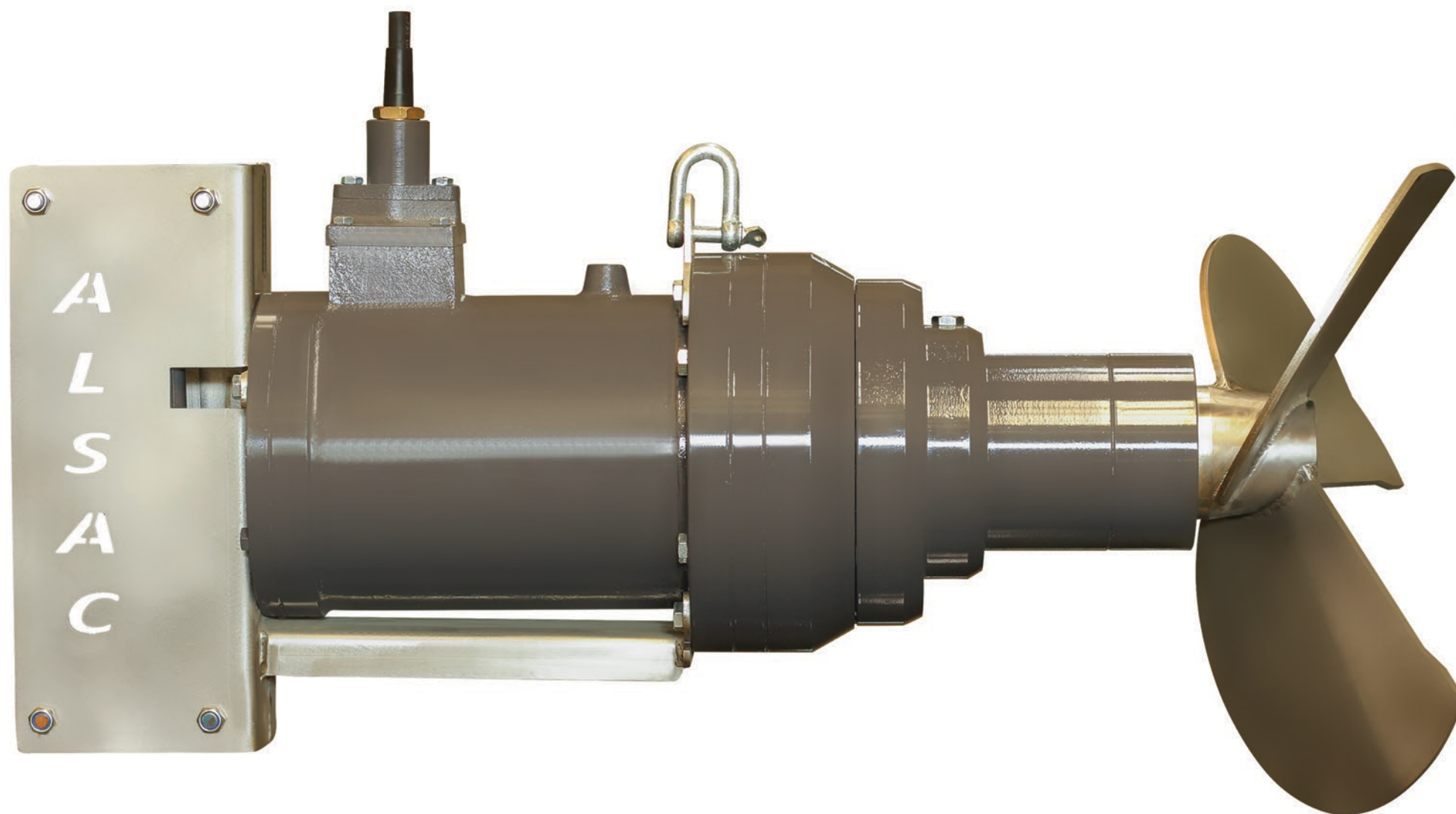
Our company still produces Solid Manure Spreaders (Slurry Tankers), Manure mixers, Brushes, Mechanic, Electric and Hydraulic Travays (Hoof trimming Chutes).

Our company has taken considerable steps with its follow up service both in domestic and international areas. With more than 30 year experience, young and dynamic staff, we have aimed at your goals to get efficiency which helps you to save time and manpower by producing qualifed machines. "ALSAC MACHINEARY" offers its customers the quality and power.

TSE, CE, BRAND REGISTRY, DOMESTIC GOODS, INDUSTRIAL REGISTRY are the certificates we have.

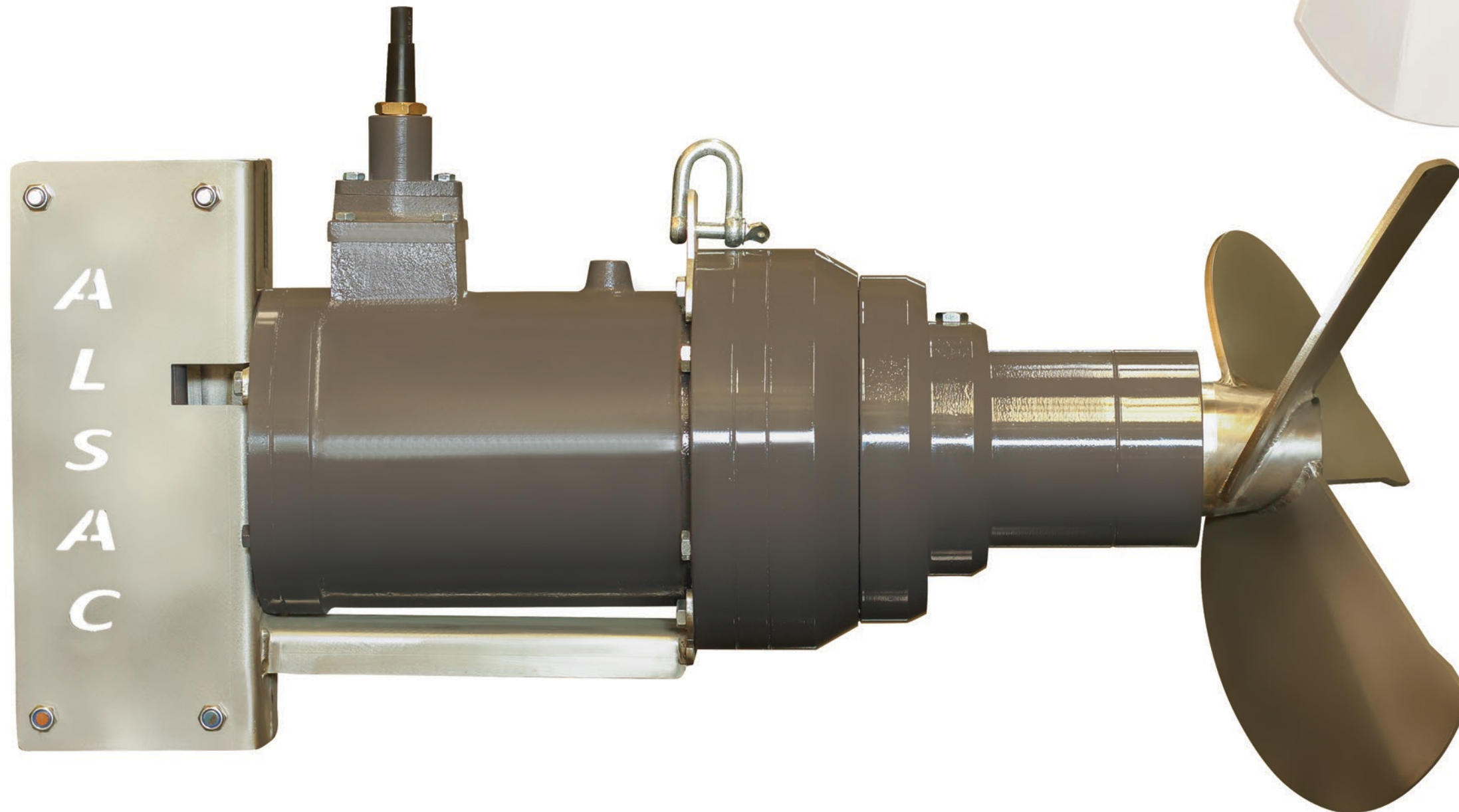
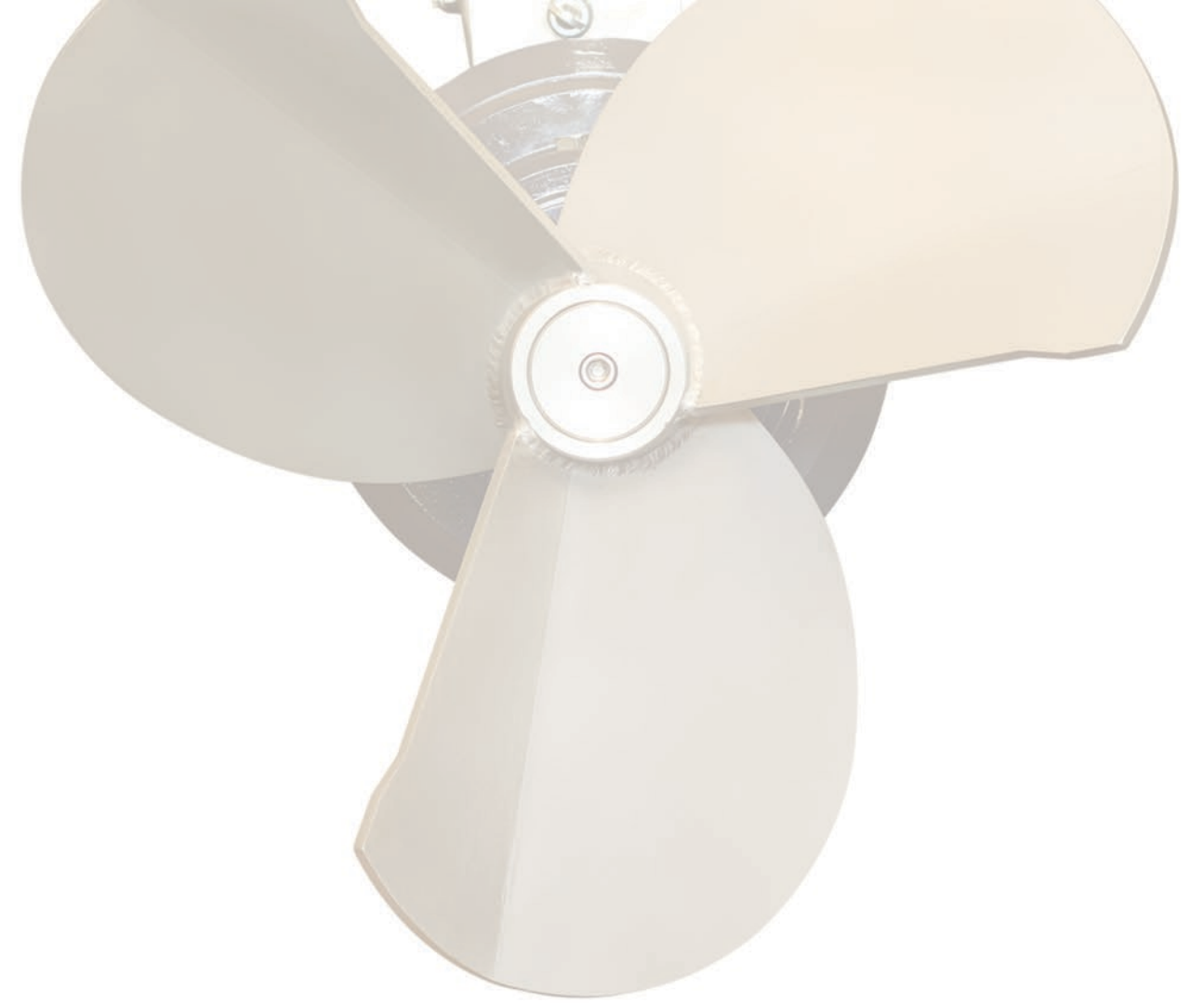


## SUBMERSIBLE MIXER



## SUBMERSIBLE MIXER

ALSAC submersible manure mixer is a specially designed mixer in order to render all the materials in a pool homogeneously. Mixing the manure homogeneously is prerequisite for the productivity of separation system. If raw manure isn't mixed periodically, the light sediments scratch the surface, while the heavy ones sink to the bottom of the pool. In this formation, manure pump, instead of the homogeneous manure, will pump in the liquid or the solid equipment that can be picked. Hence, our specially designed submersible mixers are used to render homogeneously and the export of the equipment with the aid of the pump becomes easy.



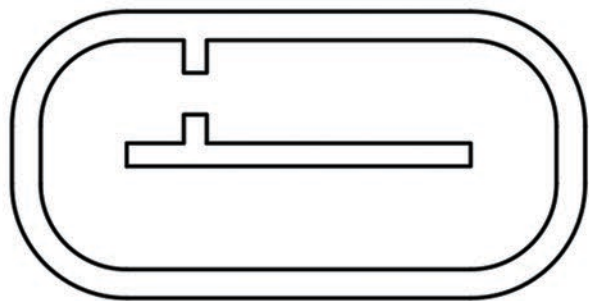




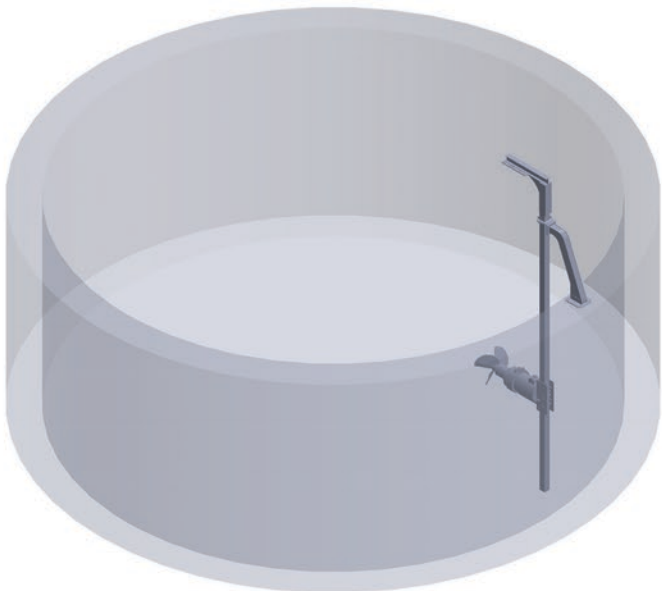
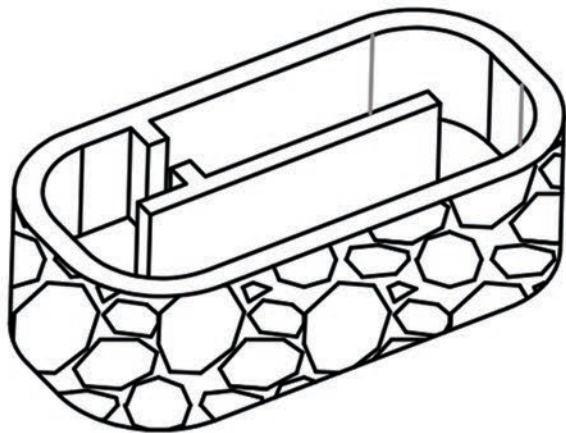
## GENERAL FEATURES

- ✧ A fan design for high performance
- ✧ Two or three-bladed fan design
- ✧ Planet transmission module, substantial for heavy working conditions.
- ✧ Large oil tank
- ✧ A mechanic packing both for the rollers and the engine.
- ✧ IP 67 licenced design
- ✧ Stainless steel chassis and fans
- ✧ Bilateral fan motion
- ✧ Manned wiring system

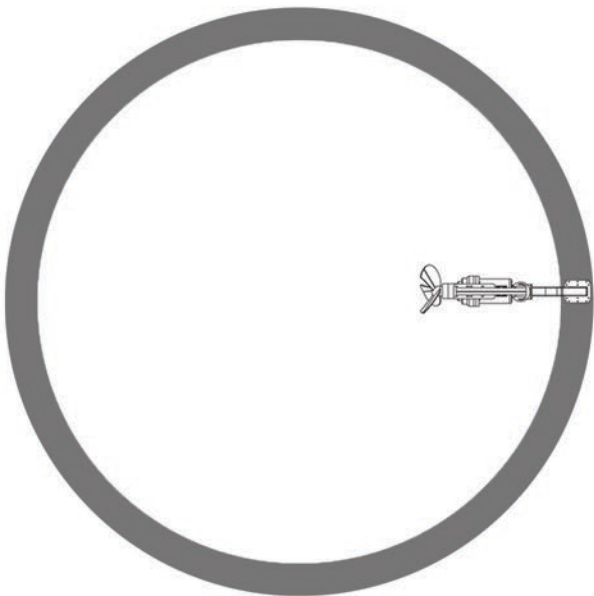
KINDS OF MANURE POOLS



RECTANGLE POOL

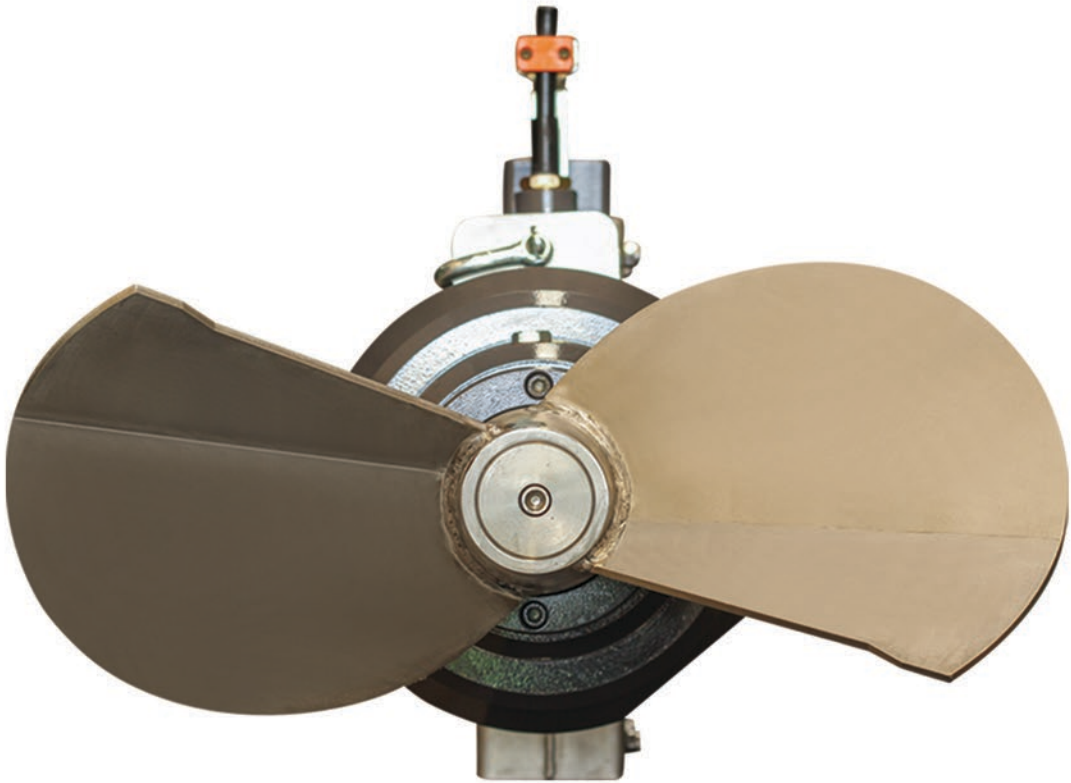
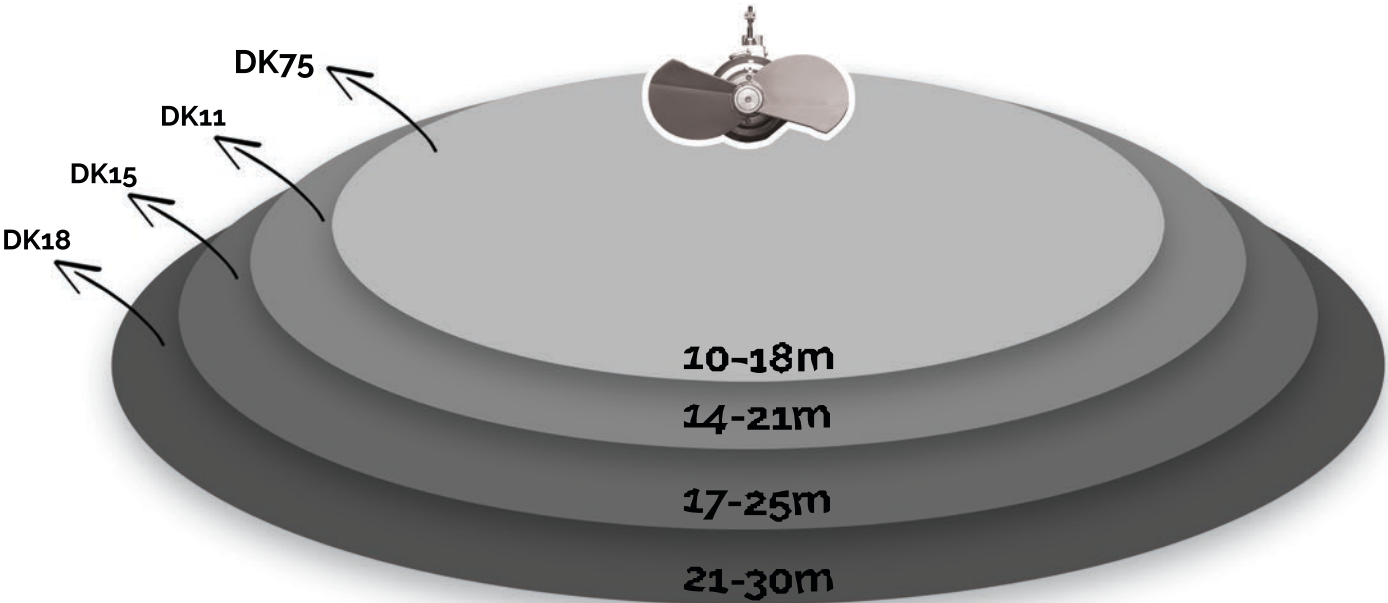


CIRCULAR POOL



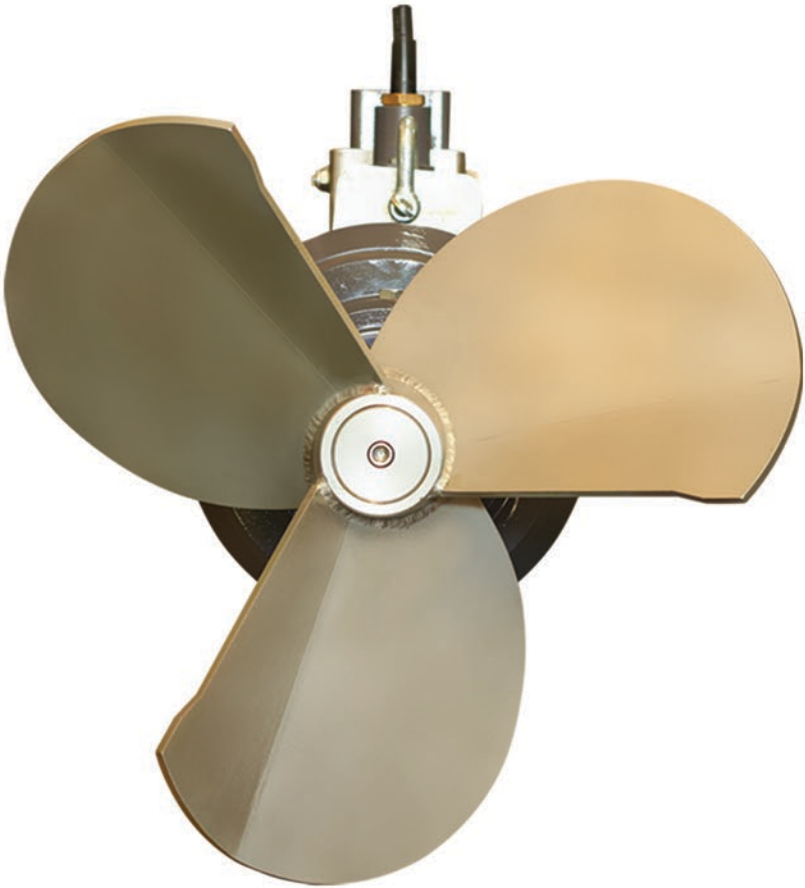


MIXING RANGE

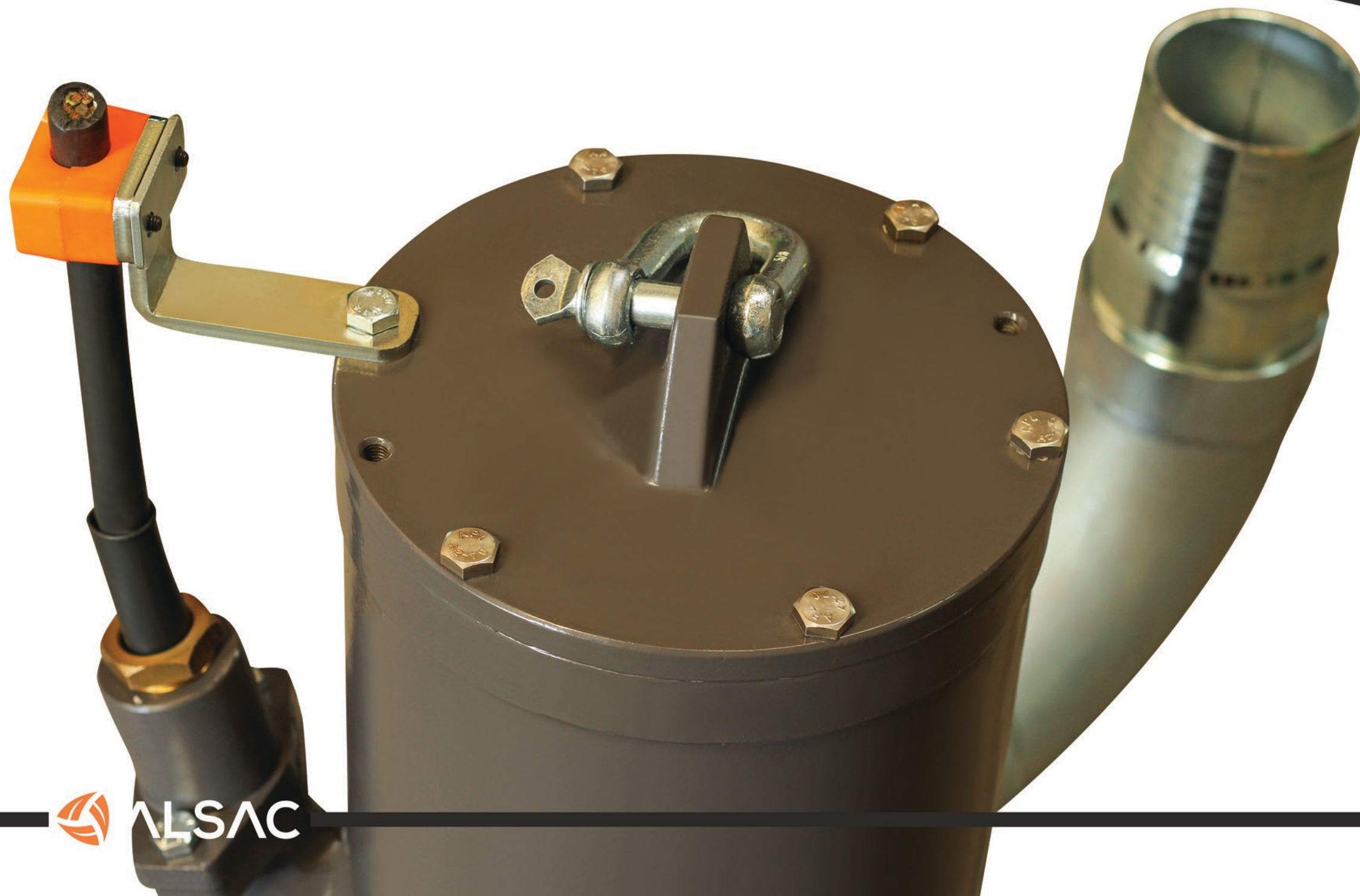


TECHNICAL SPECIFICATIONS

	DK75	DK11	DK15	DK18
POWER(kw)	7.5 kW	11 kW	15 kW	18.5 kW
FAN	325	325	300	300
FAN	316L KROM	316L KROM	316L KROM	316L KROM
MIXING CAPACITY	250	3500	5050	6100
MIXING RANGE	13-17M	17-22M	18-25M	22-30M
WEIGHT	215	250	415	450



# SUBMERSIBLE PUMP





## ALSAC SUBMERSIBLE PUMP

ALSAC submersible pumps are favored products in ranches such as agriculture, paper industry and olive companies etc.

In the worst cases it provides high-pressure flow. Plus, the reason why it is preferred is that it is easy and practical in use and all equipments run properly under all bad circumstances.

Alsac submersible manure pumps work in various levels in the pool. The base used as durable chassis provide the pump to move comfortable and expedite the service and cleaning. Due to the detailed designment, it is energy saving and runs quite.



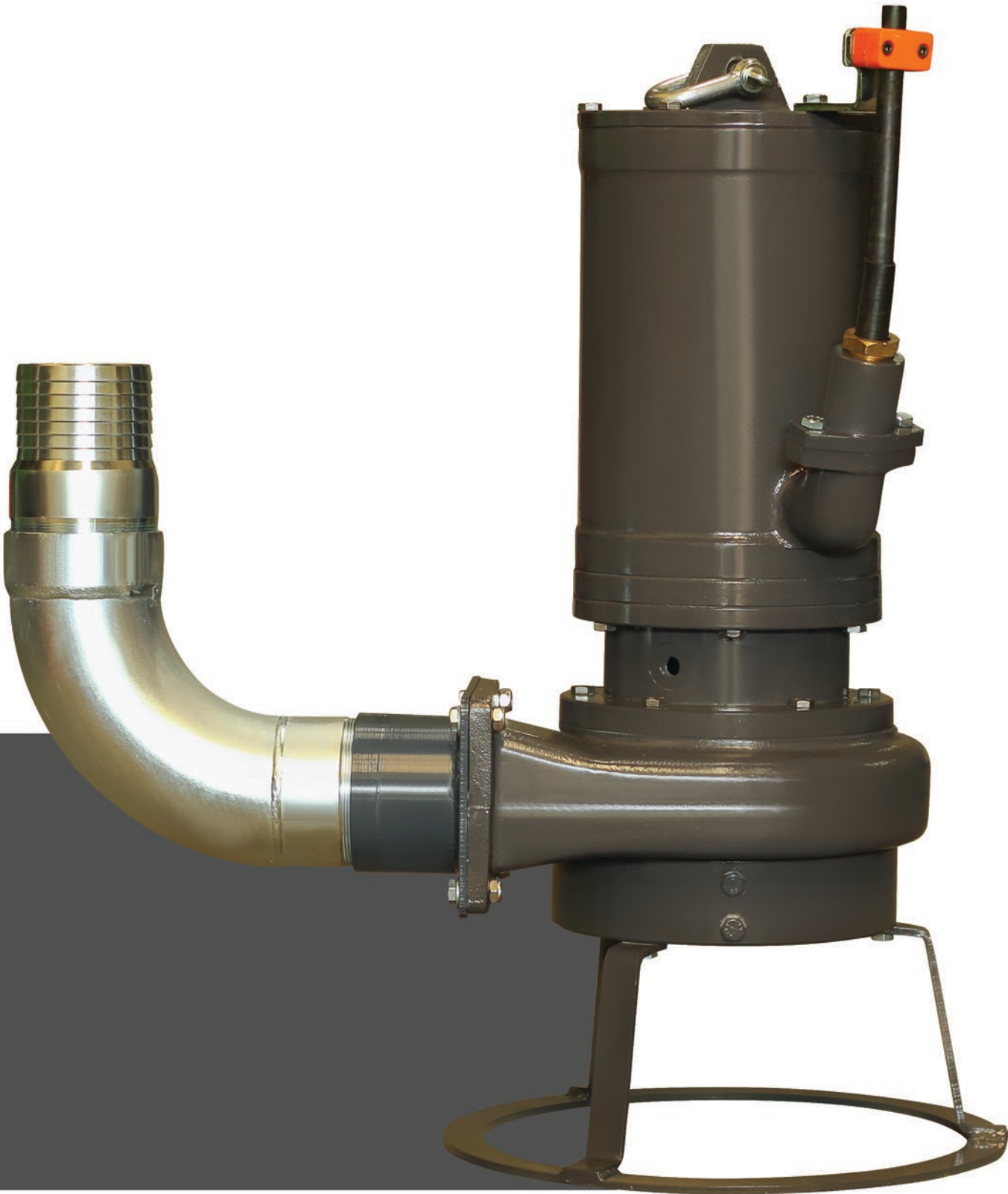
# DURABLE AND IRREVOCABLE!

Manure pumps are the equipments which take on the hardest task in the fields they are used. Therefore, the pumps we design run under the worst conditions which makes it favorably enduring. Whether it is straw mixed raw manure or is used in the paper or olive companies, our manure pump, that is produced from 5.5kw to 18.5kw, can easily pump the equipment.

- Direct drive 1450 rpm
- 4140 Tempered steel pump shaft
- 4140 tempered steel cast fan for durability
- Steel for easy conversion and hardened sharp blades

## FEATURES

- IP67 licensed design
- Thermal sensors
- Felts against leak
- Mechanic packing
- Stainless steel bolts
- From special steel hardened blades against long and solid equipments
- High productivity and durable fans

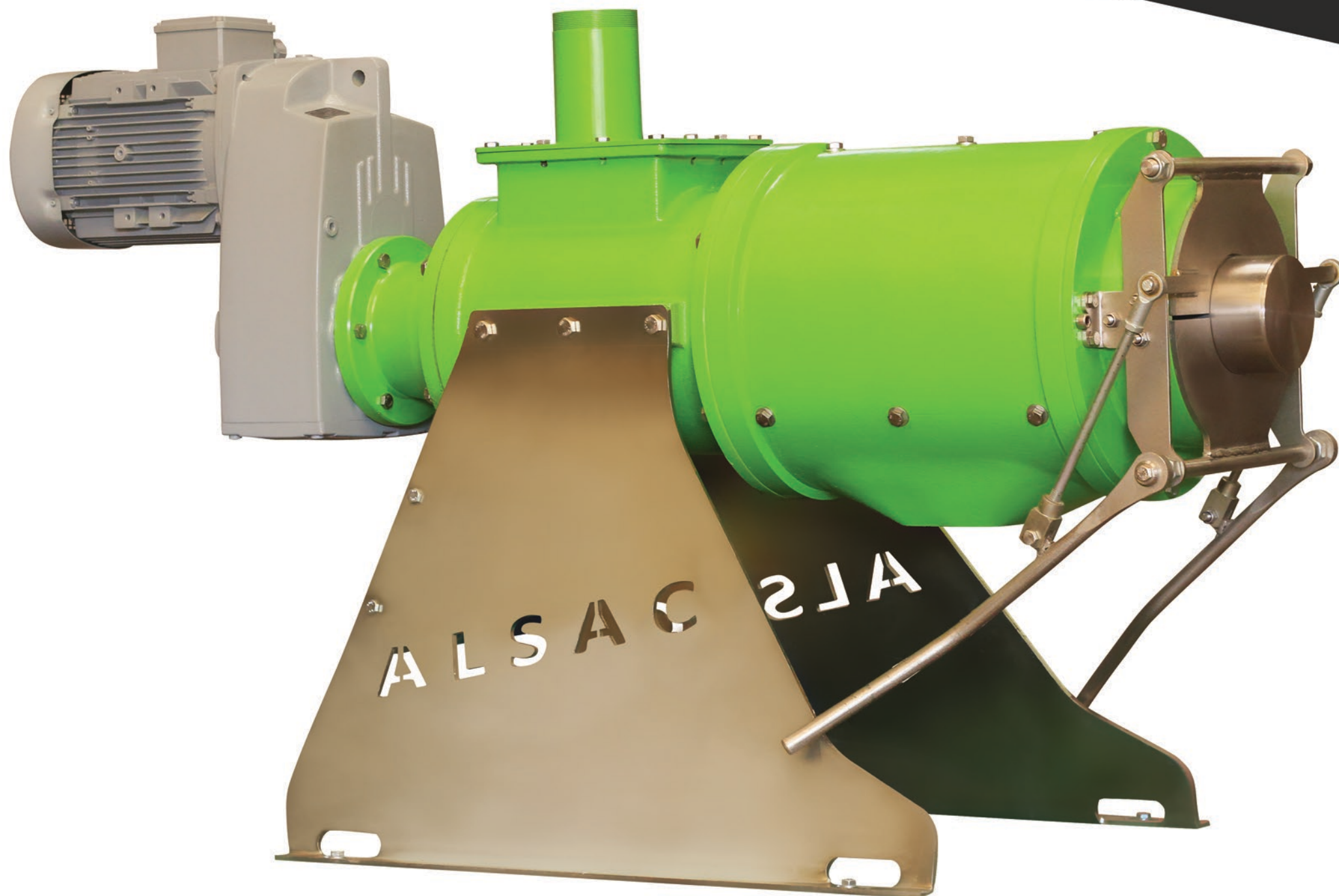


## TECHNICAL SPECIFICATIONS

	GP55	GP75	GP11	GP18
POWER (Kw)	5.5 kW	7.5 kW	11 kW	18 kW
CAPACITY	60-80M3	80-100M3	90-110M3	100-140M3
HELIS PROPELLER	4140 HARD STEEL CASTING			
BLADES	HARDENED SHREDDER BLADES			



# MANURE SEPARATOR





## MANURE SEPARATOR

ALSAC manure separators are designed to dewater the animal manures that include fiber-rich organic slurries.

Today the leading problem for the owners of the ranches is the manure problems. If not planned before-hand, serious troubles can easily occur.

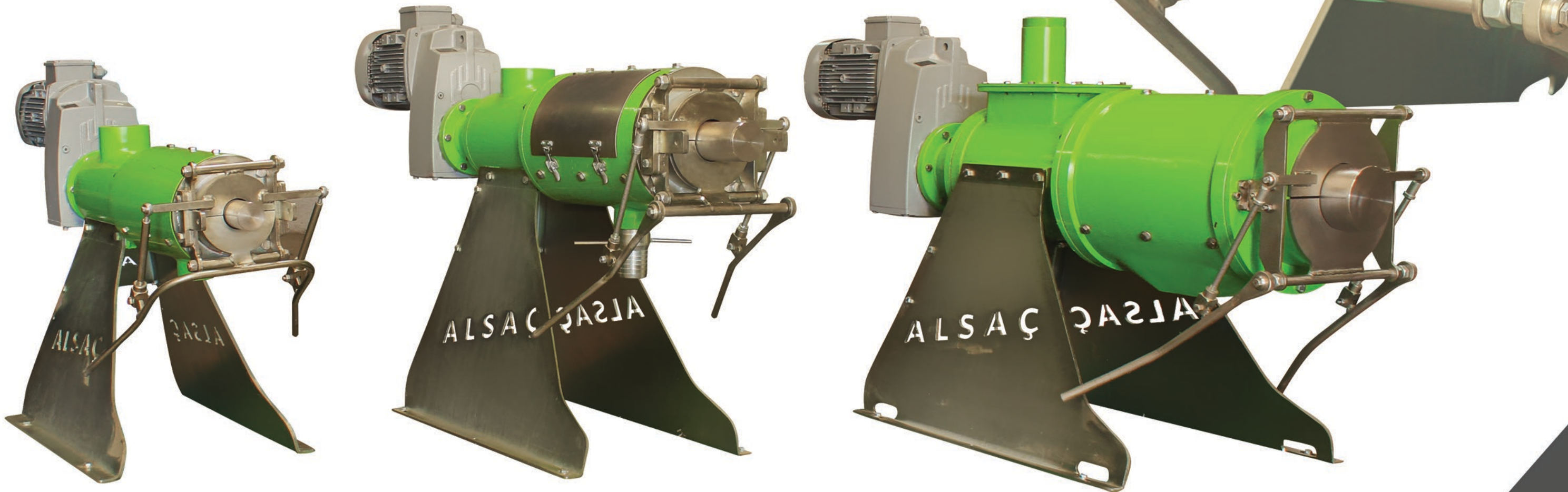
Alsac Machinery gives specially designed solutions for manure management to separate solid or liquid equipments.

Solid and liquid components gained from separation, add benefit to the ranch economy. Besides, in this way we annihilate the stock obligation of the separated manure.

Currently our separation systems are worldwide.

ALSAC MACHINERY separators present effective and practical solutions for all manure management regulations.

Please donot hesitate to contact us for your dewatering needs in order to share ideas about how we can help.





# MANURE SEPARATOR

🔧 Separator systems help you to reduce the cost of manure management in your farms and to use these in more useful areas such as bed materials and land gradings.

🔧 Reduce the raw manure area at the rate of %35.

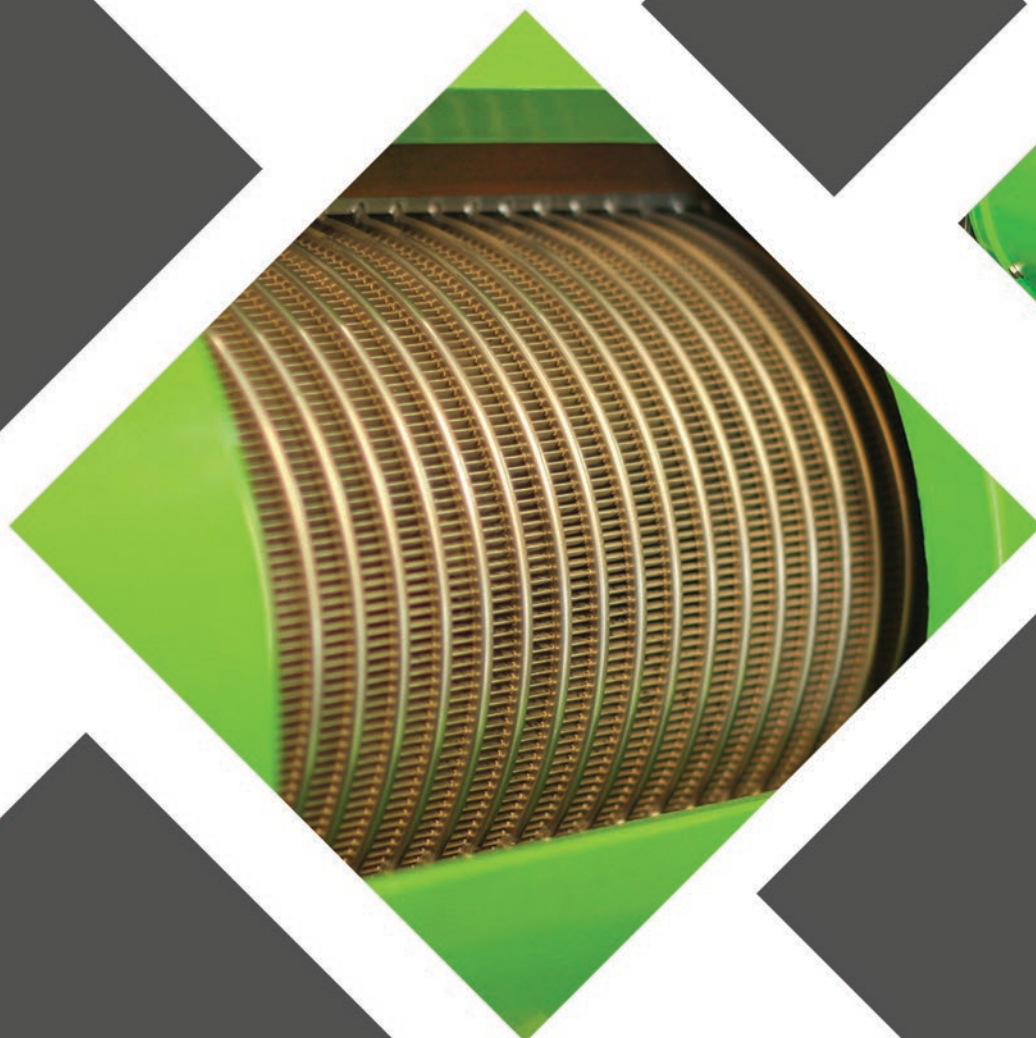
🔧 Pull down the cost of pool construction and its transportation

🔧 Recover from the cost of mixing and pumping the manure which is separated both to solid and liquid.

🔧 Use the separated manure for land grading and reduce your need of chemical manures..

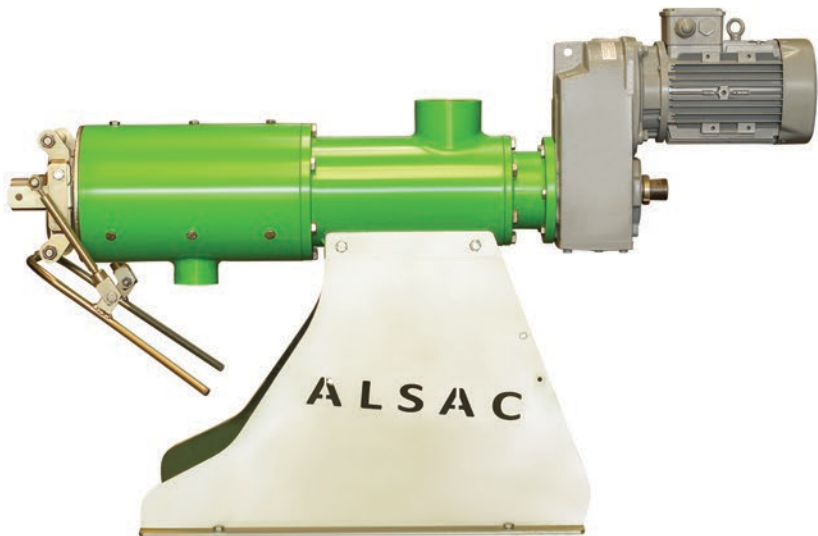
🔧 Organise the farm environment and get rid of the bad smell.

🔧 Use the liquid gained from separated manure in watering and increase your agricultural productivity at high level.

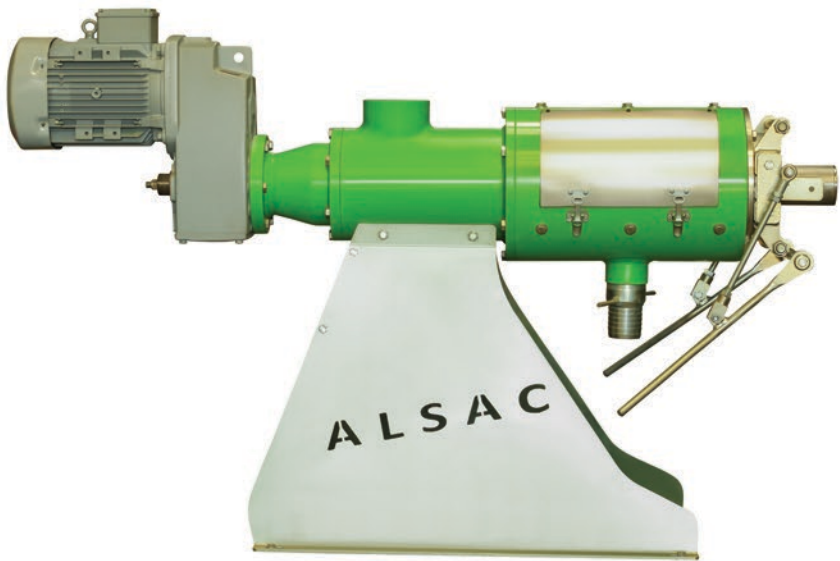


GENERAL FEATURES

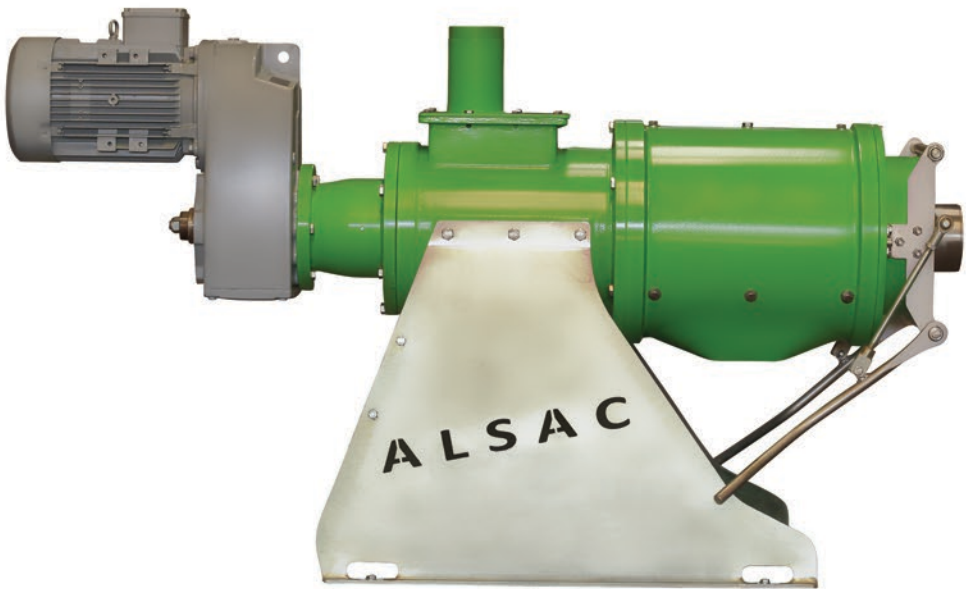
- ⚙️ A port mechanisation produced together with ALSAC MACHINE
- ⚙️ Reinforced reductor
- ⚙️ High-enduring chromium screen and helix
- ⚙️ Durable cast body for external factors
- ⚙️ Special montaging details for fast service and comfortable demontaging.



	SP450
WEIGHT	380 KG
POWER	2.2 kW
AUGER	TUNGSTEN CARBIDE HARD-COATED STAINLESS STEEL
SCREEN	SPECIALLY REINFORCED STANDARD SCREENS; WITH 0.3-1.0MM SLOT WIDTHS



	SP550
WEIGHT	450 KG
POWER	5.5 kW
AUGER	TUNGSTEN CARBIDE HARD-COATED STAINLESS STEEL
SCREEN	SPECIALLY REINFORCED STANDARD SCREENS; WITH 0.3-1.0MM SLOT WIDTHS



	SP650
WEIGHT	650 KG
POWER	7.5 kW
AUGER	TUNGSTEN CARBIDE HARD-COATED STAINLESS STEEL
SCREEN	SPECIALLY REINFORCED STANDARD SCREENS; WITH 0.3-1.0MM SLOT WIDTHS



# MANURE SCRAPERS





## MANURE SCRAPERS

Manure scrapers, by driving manures to the holes with chain, cable and hydraulic driven scraper systems, are used to keep your barn environment healthy and to store them automatically.

In terms of animal health, it is vital to clean the barn environment of animal manure and urine. A continuous contact of animals to the manure and urine causes various diseases, an increase in veterinary expenses and for that matter a reduce in profitability. The system daily enables you to clean the manure on the surface of the barn manually or time-adjusted automatically.

System itself doesnot discomfort animals in due course of working. If an animal happens to stay in front of it, it goes back and wait for them to fall back. By courtesy of the system the barns will stay dry and the animals will be healthy and clean

**ALSAC MANURE SCRAPER SYSTEMS WITH ITS SIMPLICITY IN SERVICE, NO-TROUBLE RUNNY OPERATION FORM AND HIGH-ENDURING MACNINE PARTS, IS THE CHOICE OF THE FARMERS WHO THINK BIG.**





# GENERAL FEATURES

- Mode of operation can easily be programmed by means of PLC controlled screen.
- Scraper bars are designed to scrap the manure while moving forward and not to gather them up while moving back.
- Mode of operation is stopped by the help of sensors while moving back and forth.
- Except already designed existing scraper applications, special solutions are generated for unexpected conditions if needed
- Optionally, single-alley or two-alleys can work.
- According to your barn conditions, various types of scrapers can be produced.





# ALSAC HYDRAULIC SCRAPER

Mobile slides laid down the scraping path roller which is connected to hyraulic unit, drives at the length of the roller itself.

The working period and the speed of the scraper can be programmed manually or automatically.

# ALSAC CHAIN SCRAPER

- \* Drive component is heat treated chain.
- \* ALSAC chain scraper can work on insensitive grounds.
- \* The working period and the speed of the scraper can be programmed manually or automatically.
- \* In cable and chain scrapers include the edge pulleys.
- \* Chain scraper unit and system are protected by a cover.
- \* All the parts are heat treated galvanic.

DRIVE COMPONENT	DRIVE POWER	RUNNING SPEED	SCRAPER WIDTH	MIDDLE GUIDANCE (STEEL)	SCRAPER HEIGHT	PERIODICAL TIME SET UP	DRIVE TYPE	DRIVE COMPONENT	DRIVE POWER	RUNNING SPEED	SCRAPER WIDTH	MIDDLE GUIDANCE (STEEL)	SCRAPER HEIGHT	PERIODICAL TIME SET UP	DRIVE TYPE
HYDRAULIC CYLINDER	2.2 KW	5M/DK	1.0M-4.6M	NPU 130	210MM	YES	HYDRAULIC UNIT	12-13X36 HEAT TREATED CHAIN	0.75 KW	5M/DK	1.0M-4.6M	NPU 80	210MM	YES	GEARBOX DRIVEN CHAIN WHEEL





# ALSAC CABLE SCRAPER

- As the drive component, standard 316 stainless cable is used.
- ALSAC cable scraper can work even on insensitive floors.
- The stainless cable connected to the scraper can pour the manure to the hole effectively and clean.
- Cable scrapers work according to the movement it takes from the specially designed gearbox driven drum.
- All the parts are heat treated galvanic.

DRIVE COMPONENT	DRIVE POWER	RUNNING SPEED	SCRAPER WIDTH	MIDDLE GUIDANCE (STEEL)	SCRAPER HEIGHT	PERIODICAL TIME SET UP	DRIVE TYPE
10MM HDPE AISI 316 CABLE	0.75 KW	5M/DK	1.0M-4.6M	NPU 65	210MM	YES	GEARBOX DRIVEN DRUM





# TRAVAY (HOOF TRIMMING CHUTE)





## ALSAC TRAVAY (HOOF TRIMMING CHUTE)

ALSAC travays are designed to give priority to the animal health. ALSAÇ hoof trimming chutes are used most commonly in Turkey and world-wide. They are designed to gain the best results even under the most difficult situations. Positive feedbacks in years prove this. Its mode of operation is so productive that animals in farm stay comfortable and relaxing.

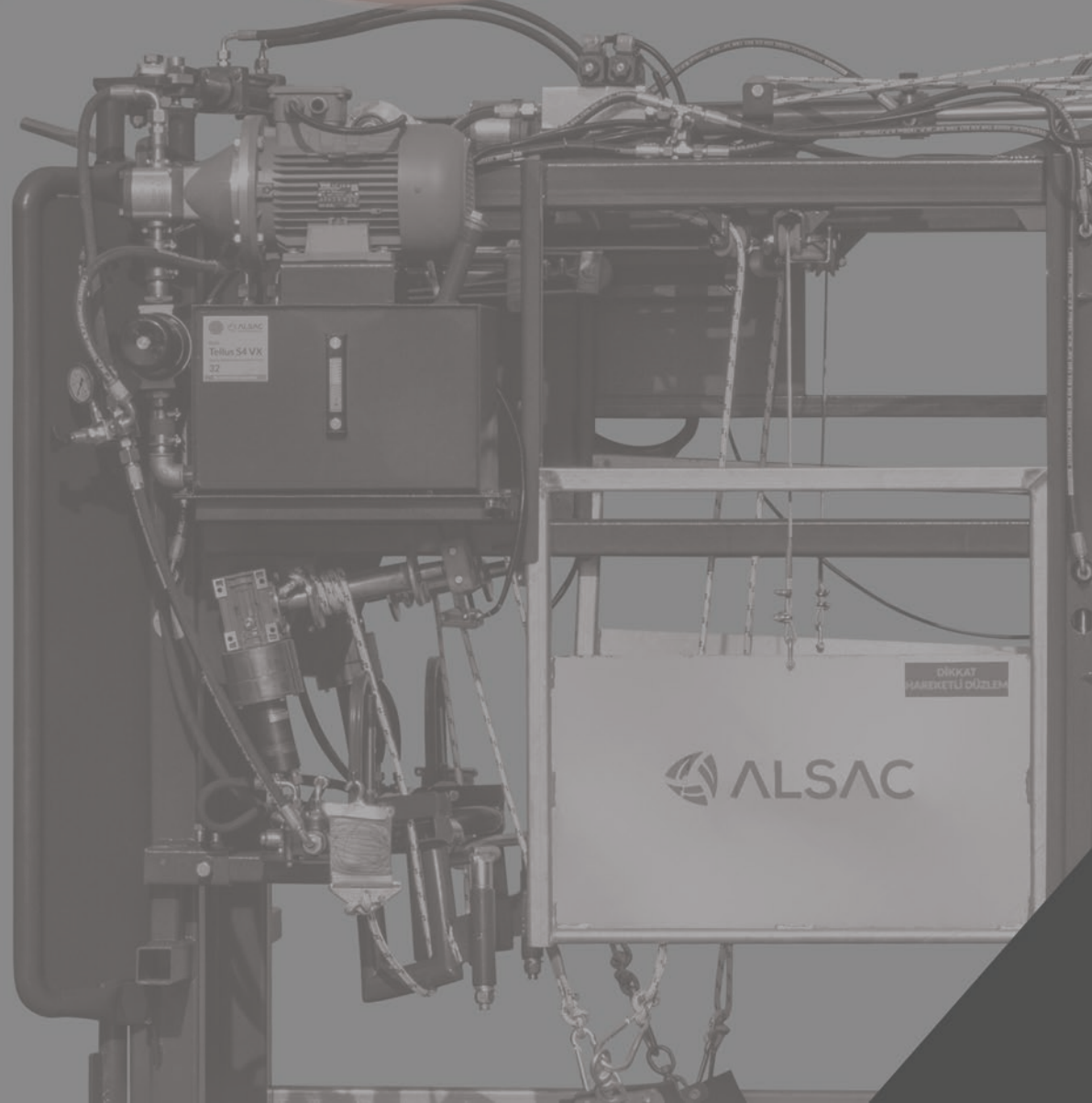
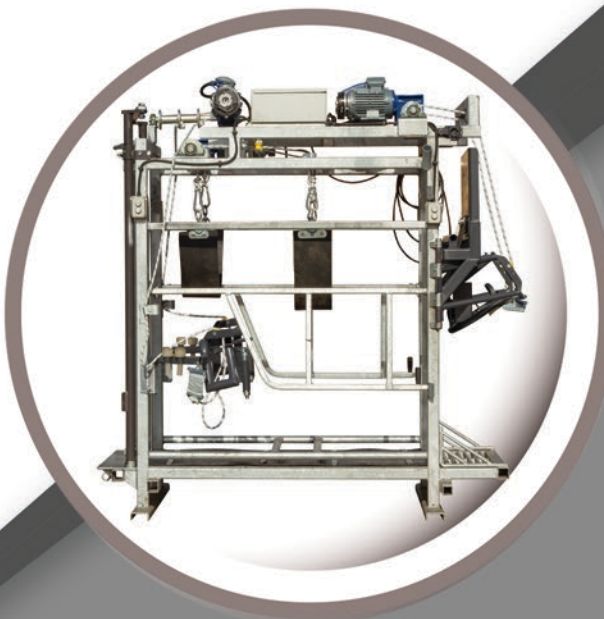
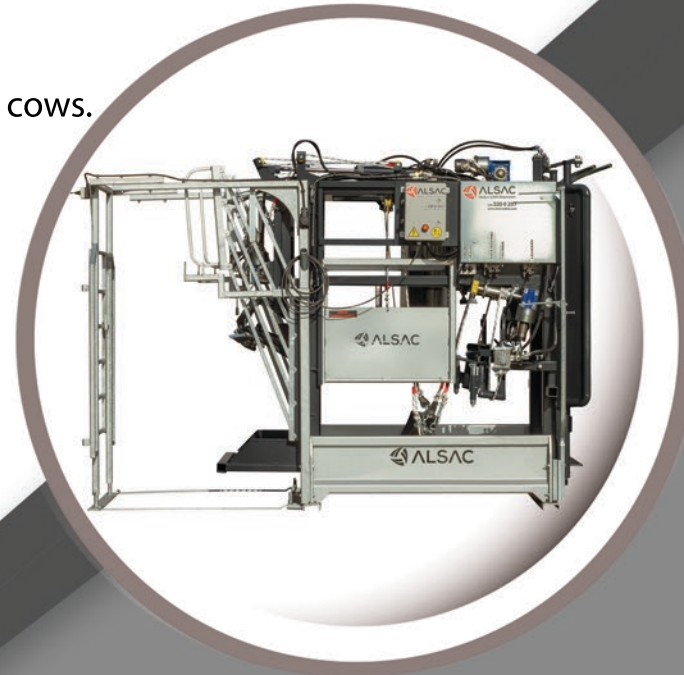
ALSAC travays offer practical and effective solutions for hoof trimming facility. Our company gurantees the results beyond expectations and has taken it as a mission.





## GENERAL FEATURES

- ☞ Specially designed foreleg and hindleg angles in company with a vet.
- ☞ Specially designed foreleg and hindleg angles in company with a vet.
- ☞ Comfortable and fast working capacity.
- ☞ High-resisting chassis.
- ☞ Body is durable for corrosion and covered with oven-dying.
- ☞ Ergonomic working area.
- ☞ Easy loading and comfortable position for the cows.
- ☞ Versatile design provides cost-effective hoof trimming for your dairy cows.



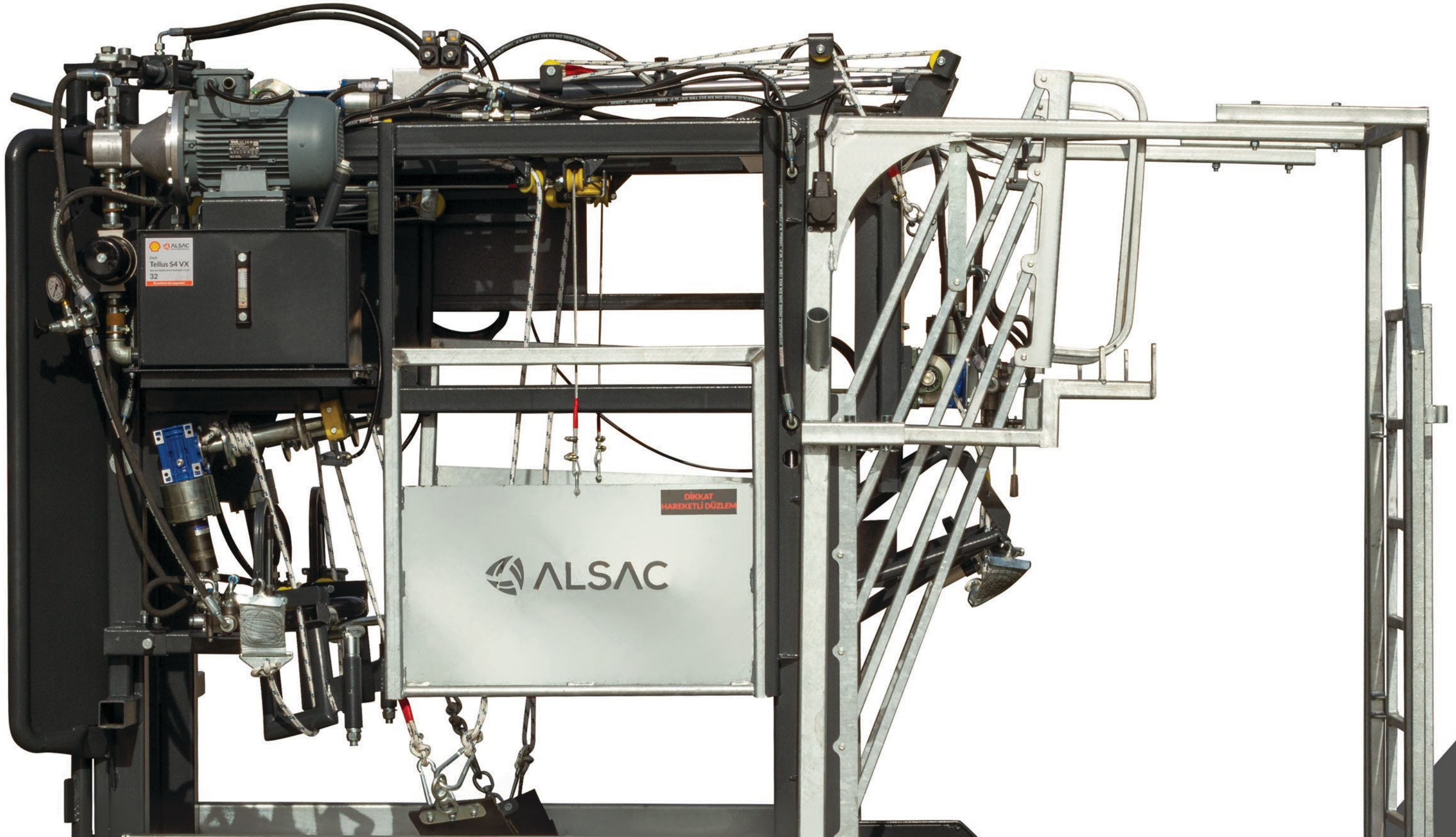


# FINE DETAILS! EXCELLENT RESULTS

ALSAC travay is famous for its high-comfort and productivity both in Turkish and Global market. We provide this with our design superiority, details in production line, the importance we give to research and development process and high-quality intellection. In travay market, we introduce our special chassis which has a maximum durability by hand workmanship.

ALSAC travay, with its easy service, smooth work of operation style and high-enduring machine parts, is the choice of thinking-big vets and companies.

ALSAC travay offers you the herd management, the reliability and the quality you expect from your partner and gives you solutions according to your needs.





## ALSAC MECHANIC TRAVAY

All the operations for cows in mechanic travay are held by manuel locking systems. This is the simplest one we produce among all the others.

After pulling the leg up, manual locking systems never allow some troubles such as releasing and hurting the animal.

According to the working principle of the system, it isnot necessarily set up on a smooth floor.

	DRIVE POWER	MİN. MAX CAPACITY	FLOOR	DIMENSIONS	DRIVE COMPONENT
MEKANİK TRAVAY	1.5 KW 1.1 KW	6-10 COWS	RUBBER	Width: 870mm Length: 2200 Height: 2080	MECHANIC



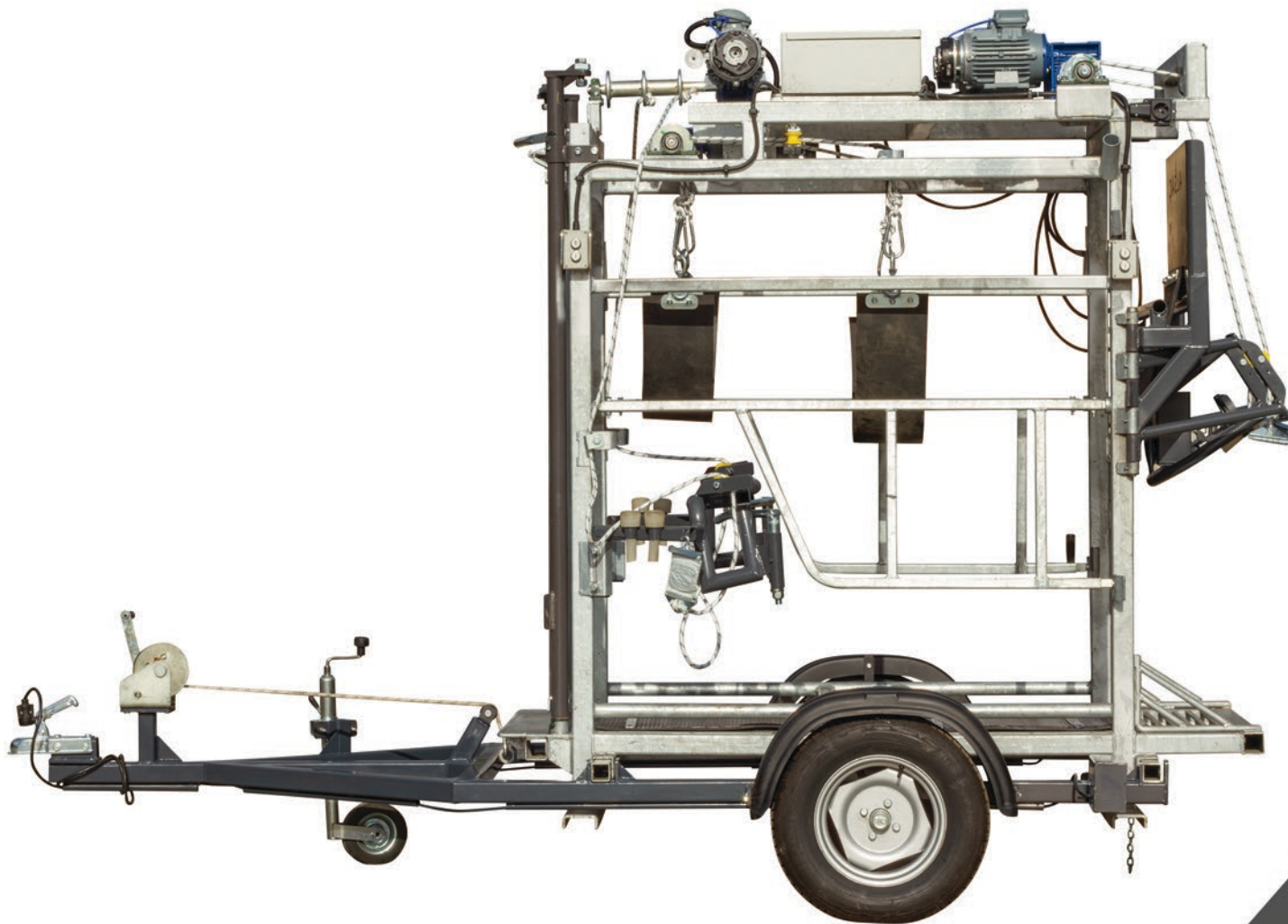
## ALSAC ELECTRICAL TRAVAY

All the operations for cows in electrical travay are held by electric motors. Under no circumstances, it gives no difficulty to the vet or the hoof trimmer. In this machine only the front door, back door and side curtains are manual. The gear system in the motors never release.

For this reason, the animal in the machine has a comfortable and unstressful care and then can be taken to the barn. Our machines have the options of 220 and 380 volts. They can be produced portable, if ordered.

According to the working principle of the system, it isnot necessarily set up on a smooth floor.

	DRIVE POWER	MİN. MAX CAPACITY	FLOOR	DIMENSIONS	DRIVE COMPONENT
ELECTRICAL TRAVAY	1.5 KW 1.1 KW	15-30 COWS	RUBBER	Width: 870mm Length: 2200 Height: 2080	ELECTRIC MOTORS





## ALSAC HYDRAULIC (B) TRAVAY

All the operations for cows in hydraulic (B) travay are again held by electric motors but in addition to this you can calibrate the level by the help of the pistons which lets the working distance to be pulled upwards. Being able to calibrate the working distance at a comfortable level resolves your bending problems and this avoids the waist injuries. As in our other machines, a good and comfortable care is done properly. But the the term of maintenance gets faster when compared to the mechanic and electric travays. There are 220 and 380 volt options in our machines. They can be produced portable, if ordered.

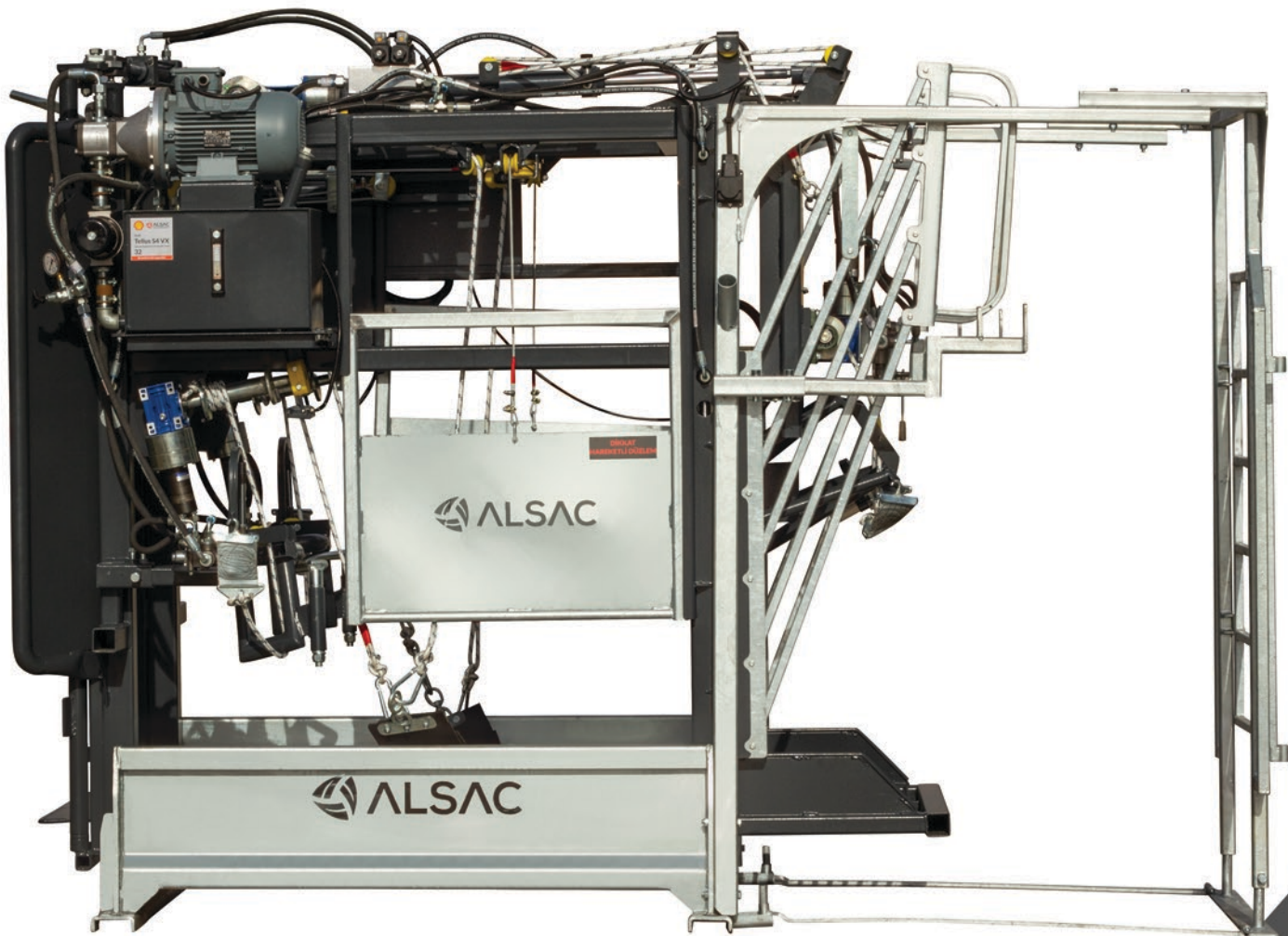
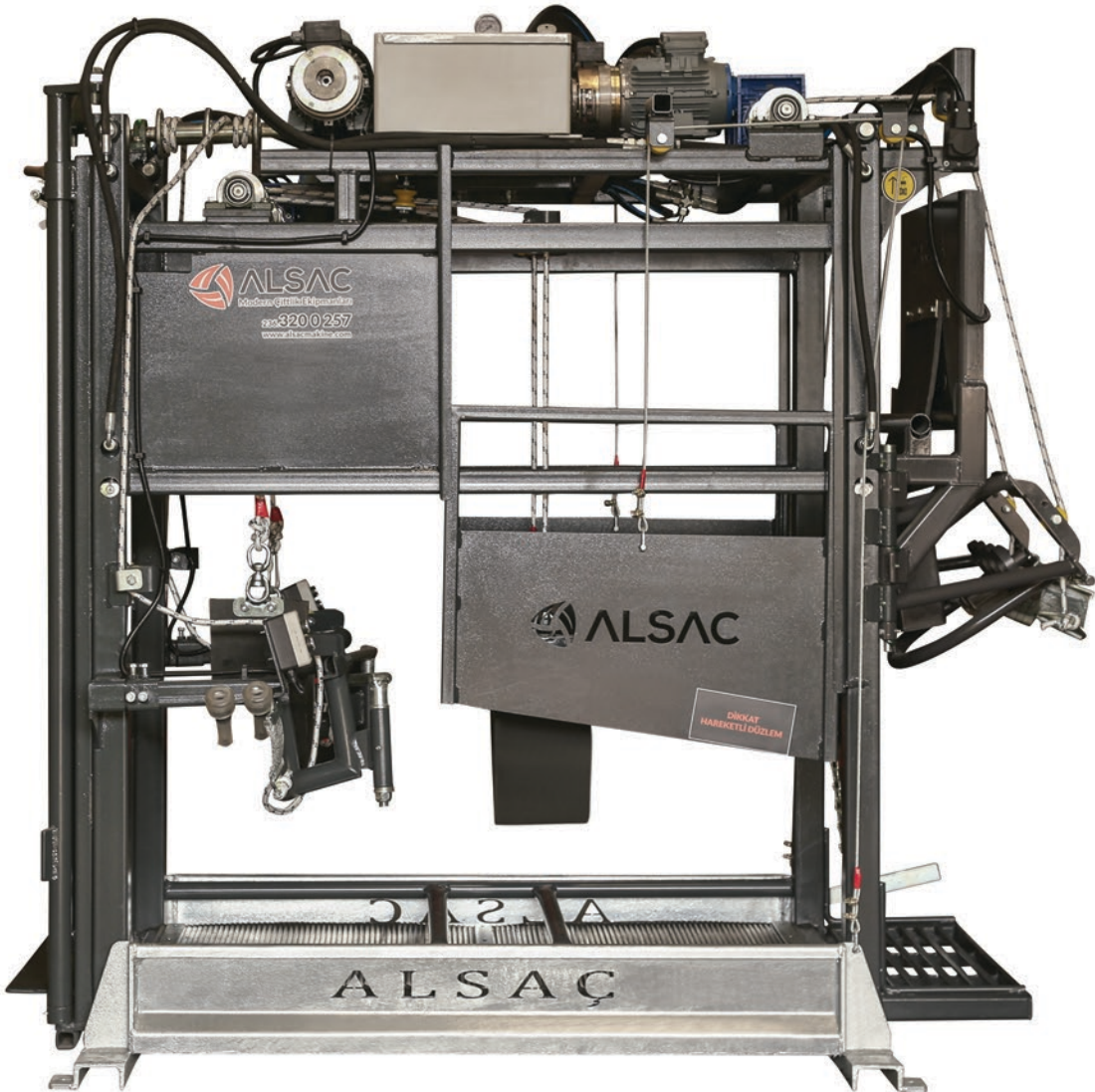
According to the working principle of the system, it isnot necessarily set up on a smooth floor.

## ALSAC HYDRAULIC TRAVAY

Hydraulic travays, when compared to the others, are the fastest and the heaviest ones. All the operations for cows in hydraulic travay are held by hydraulic systems, supported by hidro motors. It is faster than the others so the operations can be done in a very short time. In these travays, front door, back door, forelegs and hindlegs and abdomen bands move by the help of hydraulic system so this gives you comfort and extra time. You can easily set your working level to avoid your waist proplems. Our machine can only work with 380 volt. They can be produced portable, if ordered.

According to the working principle of the system, it isnot necessarily set up on a smooth floor.

	DRIVE POWER	MİN. MAX CAPACITY	FLOOR	DIMENSIONS	DRIVE COMPONENT		DRIVE POWER	MİN. MAX CAPACITY	FLOOR	DIMENSIONS	DRIVE COMPONENT
MEKANİK TRAVAY	1.5 KW 1.1 KW	25-40 COWS	RUBBER	Width: 870mm Length: 2200 Height: 2080	ELECTRIC MOTORS AND HYDRAULIC	ELECTRİCAL TRAVAY	1.5 KW 1.1 KW	50-80 COWS	RUBBER	Width: 1500mm Length: 3200 Height: 2200T	HYDRAULIC









# SLURRY TANKERS





# ALSAC SLURRY TANKERS

Our slurry tankers spread the liquid and solid manures gained from separated ones on your fields efficiently.

You can use your specially produced tankers in watering, transport and delivery as well. Manure tanks offer you effortless manure application even in the most demanding field conditions.

Easily fill and empty your tank in less than 3 minutes. You can spread the manure homogeneously over a 20m semi-circle by means of a sheet placed at the back of the tank.





# ALSAC SLURRY TANKER FEATURES

- 🌀 7-20 tons loading capacity in various models.
- 🌀 Steel sheet material. Durable for corrosion, heat treated galvanic body, enduring bows and original breakwaters.
- 🌀 Specially designed spreading sheet at the back part, 4" manuel or hyraulic valve.
- 🌀 Required tractor power is 70HP for 7 tons and 120HP for 20 tons.
- 🌀 The tanker maintenance can be done through the 550mm entry at the back bows.
- 🌀 Tyres 550/R-22.5
- 🌀 Pressure resistant level indicator mirrors are supported with steel bands.
- 🌀 Under bad conditons when it seems impossible to step in the field, specially offered atomizing nozzles can spread the manure homogenously at most 70m away.





## FIELDS TO USE

- ☞ To spread the raw manure and separated manure onto the land.
- ☞ To carry the gained from the raw and separated manure from one place to another.
- ☞ To help the fire brigades in the firegrounds.
- ☞ To water the trees and crops on the way.
- ☞ To water the soil or the normal roads etc.

## REPEAT CONSTANTLY!

Under all circumstances, with its specially designed form, you can spread the manure constantly.

Durability and flexibility are the priviledges in our designs. With the heat treated galvanic form, manned wheels and its original Italian pump, you can easily do the carrying, loading and pouring opeations.





TECHNICAL SPECIFICATIONS

LOADING CAPACITY	HEIGHT	WIDTH	LENGHT	COMPRESSOR CAPACITY	PTO SPEED	REQUIRED TRACTOR POWER	TYRE
7 TONS SLURRY	2800 mm	6450 mm	2550 mm	JUROP PN-58 / 6500 L/min	540	70-90	2 x (600.50 x 22.5)
10 TONS SLURRY	3050 mm	7650 mm	2790 mm	JUROP PN-58 / 6500 L/min	540	90	2 x (600.50 x 22.5)
14 TONS SLURRY	3305 mm	8755 mm	2850 mm	JUROP PN-84 / 9000 L/min	540	120	4 x (500.50 x 22.5)
20 TONS SLURRY	3500 mm	7900 mm	3000 mm	JUROP PN-84 / 9000 L/min	540	120	4 x (500.50 x 22.5)





## COW BRUSHES

- By regulating the blood stream, it protects the cow from external parasites.
- It causes the animal to be well-cared by cleaning the filth and dust.
- Milk productivity increases in the relaxed cows.
- The brushes are incapacious and donot cause visual pollution.
- Easy montaging and use.
- With its reflectibility, it never gives harm to the cows.
- It rotates at 220 volt and 25 revolutions.
- With 4-axis angular motion, it can easily reach every part.

